

T-LEVELS



**T Level
Technical Qualification
Welcome Pack**

To support your 2025/2026 delivery

September 2025

City & Guilds

Contents

Introduction	3
Important update	4
Content of a T Level	5
Support for providers	7
Network events	8
Guidance and support documents	9
Assessment requirements	10
Fees	11
Moderation	12
Industry placements	13
Exam series and results	13
Claim and share your digital credential	14
Contact us	15



Introduction

Welcome to the new academic year with City & Guilds.

This welcome pack gives an overview of the key information and milestones for providers delivering T Levels. Whether you're a new or returning provider, you'll find useful links to our guidance documents, important dates and information on the key stages of assessment and quality assurance. There are also useful contact details and handy links.



This welcome pack contains information on the following T Level Technical Qualifications (TQs) from City & Guilds:



**Engineering and
Manufacturing**



**Management and
Administration**



**Agriculture, Land
Management and
Production**



**Animal Care and
Management**

Important update

We've simplified the way centres provide and maintain key contact information for Technical Qualifications. You can now provide and update this information within Walled Garden.

You can maintain the contact details for your designated contacts, qualification leads and all key centre staff in one simple to use contact management page. Centres must ensure that the information for Senior Designated Contacts, Qualification Leads and key Centre Staff is kept up to date throughout the academic year.

Our teams will use the contacts provided to communicate with centres delivering Technical Qualifications, as well as for the distribution of email updates throughout the year.

In order for us to reach the right people, it is vital therefore that you maintain your contact details on Walled Garden.

Details on how to do this, and further information regarding the types of contact information needed, can be found within the [Manage Your Centre Contacts](#) page on our VTQ Information Hub.



Content of a T Level

T Levels are two year courses which are taken after GCSEs and are broadly equivalent in size to three A Levels. Launched in September 2020, these courses have been developed in collaboration with employers and education providers so that the content meets the needs of industry and prepares students for entry into skilled employment, an apprenticeship, or related technical study through further or higher education.

T Levels offer students practical and knowledge-based learning at a school or college and on-the-job experience through an industry placement of at least 315 hours – approximately 45 days.

T Level programme composition

Core

20–50% Total TQ time

Graded: A* to E

Core covers: Concepts and theories, transferable/core skills

Assessment: Through two externally set and marked exams and an Employer-Set Project.

Occupational Specialisms

50–80% Total TQ time

Graded: Pass / Merit / Distinction

Specialism(s) covers: Knowledge and skills relating to a specific trade

Assessment: Assessed synoptically through rigorous practical assignments to threshold competency.

Industry placement

315 hours
Min. 45 days

Maths and English

GCSE or Functional Skills Level 2*

Enrichment tutorial

*Students must continue to study maths and English if they haven't already achieved Level 2 (GCSE grade 4) as part of the condition of funding.

High level details of the T Level Technical Qualifications

City & Guilds Technical Qualification Title	QAN
T Level Technical Qualification in Design and Development for Engineering and Manufacturing	610/0516/2
T Level Technical Qualification in Maintenance, Installation and Repair for Engineering and Manufacturing	610/0692/0
T Level Technical Qualification in Engineering, Manufacturing, Processing and Control	610/0971/4
T Level Technical Qualification in Management and Administration	610/0111/5
T Level Technical Qualification in Agriculture, Land Management and Production	610/2933/6
T Level Technical Qualification in Animal Care and Management	610/4158/0

A full list of product codes and QAN codes, including those for Occupational Specialisms for the pathways listed above, are available within our Provider Approval and Quality Assurance information.



**Provider Approval and
Quality Assurance information**

Support for providers

As part of your preparation to deliver T Levels, we recommend that you review the existing support, including guidance documents, recorded webinars and FAQs that are available on our website. [These resources](#) aim to support your planning and preparation.

Please refer to the [Skills England](#) and [DfE](#) websites for further information and support.



Resource Hub

Technical Advisors

Here to provide ongoing support to your centre throughout the year, our team of Technical Advisors (TAs) are specialists in their fields and have a broad range of industry and educational experience within the further and higher education sectors.

They also have extensive experience in delivering qualifications and supporting centres across a wide range of educational settings.

To find the Technical Advisor for your industry please follow the link below where you will see all the Technical Advisors and their contact details.

Contact the relevant TA for qualification-specific queries.



Technical Advisors



Network events

Our dedicated TAs hold regular support events and webinars throughout the academic year. Sign up to receive T Level email updates as they're released.

Support events will include:

- **Live T Level webinars:** Sector-specific webinars will be held with TAs on hand to answer any questions and provide dedicated support for your TQs.
- **Recorded webinars:** Recorded presentations will be made available for those who cannot attend the live sessions.
- **Online conference calls:** During the academic year, TAs will offer centres the opportunity to arrange an online conference call, which will provide tailored support for TQs.
- **Ongoing support networks for centres:** Our team of TAs will run network events providing general updates for TQs.
- **Assessment practices and strategy:** These sessions will cover requirements and best practice supporting tutors in preparation for assessment.
- **Teaching and learning workshops:** Hosted by our TAs, these workshops will prepare your learners for external assessments by sharing valuable hints and tips.
- **Curriculum planning workshops:** These workshops will support your planning for each new year's delivery.
- **Website navigation:** Recorded videos to support T Level webpage navigation.

These network events will be advertised on our website and via email alerts.

Please ensure that your contact details are up to date on Walled Garden, so that you receive our regular T Levels updates.



Sign up form



Events page



Guidance and support documents

The following documents will be available to download from our dedicated T Level Resource Hub:

Annual planners

This calendar outlines activities that support the processes required to deliver the TQ. It includes useful reminders of when certain activities need to be completed, highlights exam dates and details support events hosted by our Technical Advisors throughout the year.

Key dates calendar

This calendar is a good reminder of important dates and activities throughout the year that centres need to be aware of. It includes the dates and times for exams and assessments.

Qualification specifications

These contain all the content required to be taught to achieve the qualification outcomes. They also detail information about staff expertise and equipment required for delivery.

Assessment support materials

Sample assessment materials (SAMs), ESP exemplars and examiner repinsorts (where available) will be available to support the learning process and preparation for assessments.

Webinars

There are a number of webinars available on-demand via our T Levels Resource Hub that support the planning and delivery of T Levels. Slide decks from these events are also available to download.

Curriculum plans

These are printable versions of exemplar curriculum planners. They are designed to support teaching staff with their planning, timetabling and delivery models. These plans are a helpful guide, and the blank templates can be used to create your own curriculum plans.

Teaching, learning and assessment guide

This guide is helpful for anyone delivering T Levels. It provides practical tips to support the delivery of T Levels and the core components of the TQ. It also outlines the key design principles of the assessment.

Tutor resources

Extensive tutor resources are available for the core content for all our Technical Qualifications. These comprise of detailed schemes of work, PowerPoint (PPT) slides worksheets and sample questions. These materials are available to download for free from the T Level resources landing page, alongside other supporting documents for these qualifications.

These materials are provided in Word and PPT format, enabling centres to customise materials to suit their own delivery. They are designed to provide support for first delivery and reduce preparation time.

Guidance for marking and moderation

Our TQ Occupational Specialism assessment process guide provides information regarding the marking and moderation of the relevant OS assessments. To support centre assessors when marking the Occupational Specialism assessment, we have also produced standardisation materials and video guides. These materials and guides are for internal standardisation and aim to familiarise staff with the standards expected, and how to effectively use the marking grids and assessment themes.

Assessment guidance

Process guides to support the delivery of the Employer-Set Project (ESP) and Occupational Specialism (OS) are available. For the Occupational Specialism assessments, we have created video and PDF guides to support your marking, as well as standardisation materials.

Approval and quality assurance guide

This guide is designed to provide an overview of the approval process and the types of quality assurance monitoring that will take place for T Levels.

Assessment requirements

The following table outlines the assessment components required to complete a full two-year TQ.

A learner needs to complete the following assessment components:

Assessment	Availability
Core exam – paper 1	Summer and Autumn
Core exam – paper 2	Summer and Autumn
Employer set project (ESP)	Summer and Autumn
Occupational Specialism(s)	Summer only <ul style="list-style-type: none"> • Engineering and Manufacturing • Management and Administration • Agriculture, Land Management and Production from 2025 • Animal Care and Management from 2026

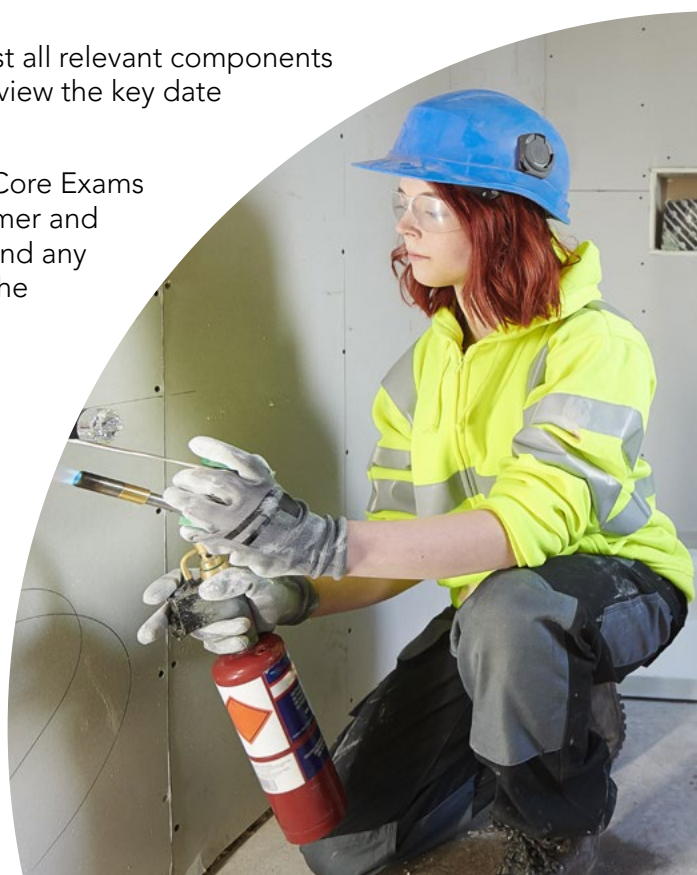
Enter your students onto all assessment components for the relevant Technical Qualification via walled-garden.com, our online administration system.

It is important that a booking is made for every student against all relevant components of the TQ. Please note that late booking fees apply. Please review the key date calendar for details.

T Level students can take the core sub-components, i.e., the Core Exams and Employer-Set Project in different assessment series (Summer and Autumn). This can be done for the first assessment occasion and any retakes, however exam papers 1 and 2 must always be sat in the same series.

The exam schedule means that a student can take the Core Exams and/or the Employer-Set Project in the summer of year one or the following Autumn series. The Autumn series can be used to support students if they are not ready to take assessments in the Summer. It can also be used to minimise the burden on centres that may be delivering more than one TQ at a time, and that need to ease the impact on exam facilities.

The Occupational Specialism assessments are typically taken in year two of a two-year T Level programme.



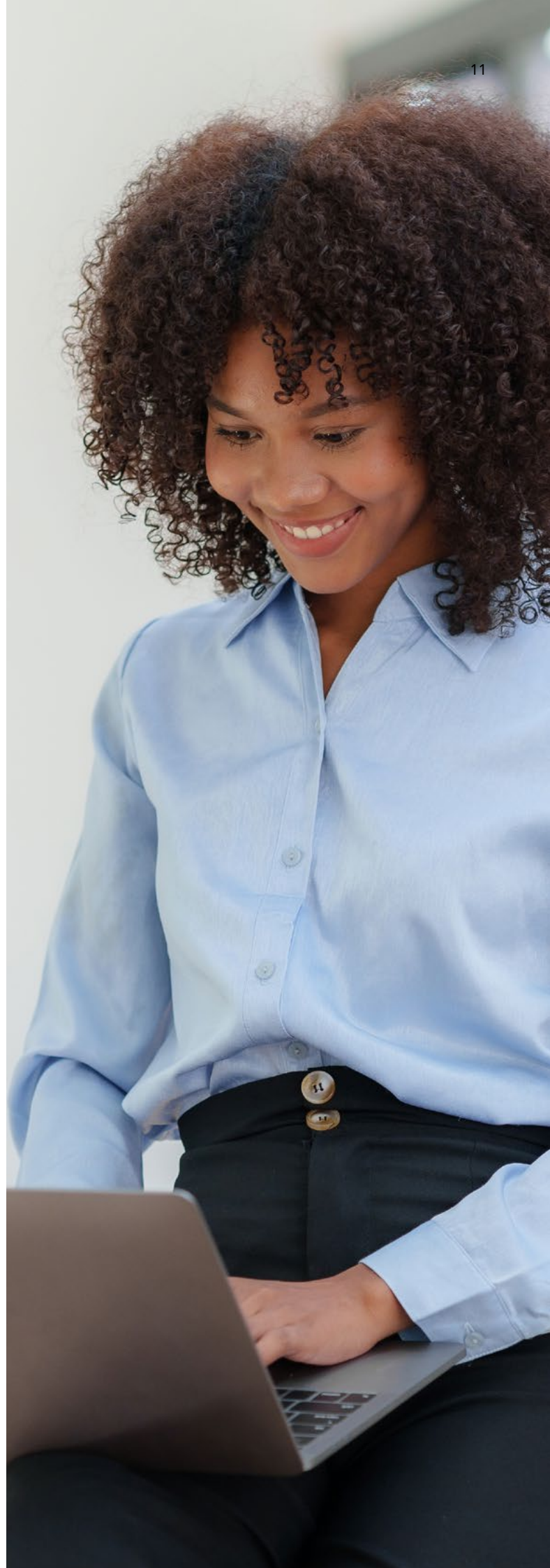
Fees

We have created a comprehensive fee and charges list for each T Level TQ which are published on our website.

These documents outline the fee charges for 2025/2026 across registrations and entries, and include late and very late fees and retake fees.



Fees



Moderation

Some Occupational Specialism assessments are subject to moderation.

Moderation is a quality assurance process whereby City & Guilds review a sample of provider marking and candidate evidence to ensure that it is accurate and consistent, in line with the correct national standard. Where it is not, provider marks may be adjusted or in some instances the work is remarked, to align them with these standards.

Quality assurance activities and visits

We carry out a range of quality assurance activities throughout the year to ensure providers are supported in their delivery. These activities will include annual Provider self-assessments, external moderation, moderation visits and exam audits. Please refer to the Provider Approval and Quality Assurance information for further details.



**Provider Approval and
Quality Assurance information**

Our T Level Assessment Guidance provides information regarding marking and moderation of the relevant OS assessments.

It includes information explaining:

- Planning candidate evidence collection
- Authenticating evidence
- What must be produced for marking
- Marker standardisation
- The marking process
- Records which need to be completed
- How to upload marks and evidence for sampling
- C&G moderation process
- Moderator visits
- Moderator reports



**Process Requirements Guide (not
for Management & Administration)**

**Process Requirements Guide (for
Management & Administration only)**





Exam series and results

City & Guilds will provide a breakdown of results via the 'T Levels Results Slip' report on the Walled Garden; we will not issue certificates or results by post.

We will also provide results of the TQ components to the Department for Education (DfE), who will issue the overall T Level grade and certificate.

[Exam Support Hub](#)

Discover support resources and guidance for every stage of the assessment cycle, including booking and conducting exams, managing access arrangements, contingency planning, and results support.

Industry placements

Industry placements are a fundamental and mandatory component of a T Level programme.

To support both providers and employers in delivering high-quality education, the DfE has published guidance on the delivery of T Level industry placements (detailed above), an employer industry placement toolkit, and a learner guide for learners preparing for an industry placement.

View the government's key documents below:

- [Guidance on T Level Industry Placements](#)
- [Employer industry placement toolkit](#)
- [Guide to industry placements](#)

Professional training development

The Education and Training Foundation (ETF) offers a range of support, through their T Level Professional Development (TLPD) offer, to help providers, practitioners and leaders deliver T Levels. The TLPD offer ensures that organisations are equipped to teach T Levels on the very first day students walk through the doors of a classroom or workshop.

For more information, visit etfoundation.co.uk/tlpd.

Claim and share your digital credential

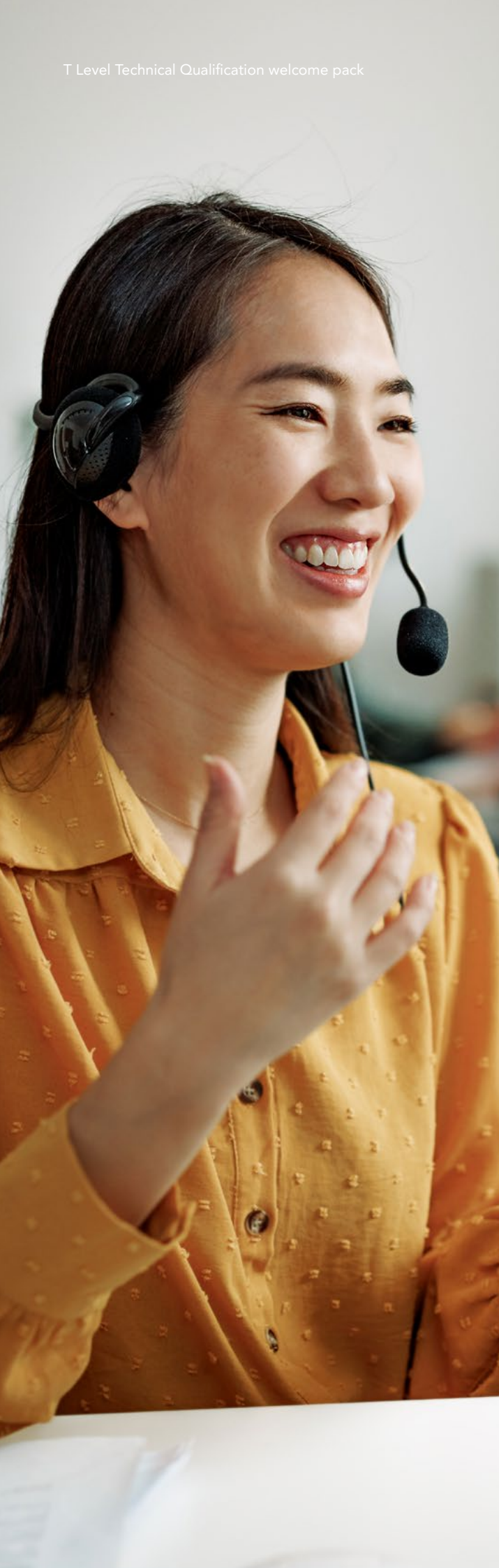
In recognition of being an approved provider of T Levels, City & Guilds are awarding centres a digital credential. Digital credentials allow us to recognise and communicate all skills consistently. We do this by using the Open Badge Standard, a universal format that creates data that can be validated quickly and easily.

Your digital credential will be issued automatically to the named T Level lead contact we have on record by the end of October.



**Find out more about
digital credentials**





Contact us

Please refer to the relevant qualification page and Technical Qualification specification for further information relating to T Level TQs.

Contact our Customer Support for registrations and entries:

Monday - Friday | 08:00 - 18:00 GMT

T: 01924 930 800

E: customersupport@cityandguilds.com

For anything else please contact our Centre Operations team:

Monday - Friday | 08:00 - 18:00 GMT

T: 01924 930 800

E: centreoperations@cityandguilds.com

W: cityandguilds.com/tlevels

Get your students involved

Please encourage your students to share their T Level experiences with us. They can hashtag us on their social channels using: #CGTLevels and #ILMTLevels



T-LEVELS

City & Guilds has been developing the skills and behaviours needed to help businesses thrive for almost 150 years. We understand that to succeed in an evolving landscape, learners need to develop the right behaviours, skills and knowledge. This is why we work with education providers, employers and governments to support you in delivering better learner outcomes.

The T Level is a qualification approved and managed by the Institute for Apprenticeships and Technical Education.

'T-LEVELS' is a registered trademark of the Department for Education. 'T Level' is a registered trademark of the Institute for Apprenticeships and Technical Education. 'Institute for Apprenticeships & Technical Education' and logo are registered trademarks of the Institute for Apprenticeships and Technical Education.

Every effort has been made to ensure that the information contained in this publication is true and correct at time of publication. However, City & Guilds products and services are subject to continuous development and improvement, and the right is reserved to change products and services from time to time. City & Guilds cannot accept responsibility for any loss or damage arising from the use of information in this publication.

© 2025 City & Guilds Limited (Reg No 16513878). All rights reserved. City & Guilds is a trademark of City & Guilds Limited. City and Guilds Group Giltspur House, 5–6 Giltspur Street London EC1A 9DE

